



Botley West Solar Farm

Additional Photomontages for Historic Environment Assessment

July 2025

PINS Ref: EN010147

Document Ref: EN010147/APP/12.7

Revision Rev 0

APFP Regulation 5(2)(a); Planning Act 2008; and Infrastructure Planning (Applications:
Prescribed Forms and Procedure) Regulations

Approval for issue

Jonathan Alsop

1 July 2025

The report has been prepared for the exclusive use and benefit of the Applicant and solely for the purpose for which it is provided. Unless otherwise agreed in writing by RPS Group Plc, any of its subsidiaries, or a related entity (collectively 'RPS') no part of this report should be reproduced, distributed or communicated to any third party. RPS does not accept any liability if this report is used for an alternative purpose from which it is intended, nor to any third party in respect of this report. The report does not account for any changes relating to the subject matter of the report, or any legislative or regulatory changes that have occurred since the report was produced and that may affect the report.

The report has been prepared using the information provided to RPS by its client, or others on behalf of its client. To the fullest extent permitted by law, RPS shall not be liable for any loss or damage suffered by the client arising from fraud, misrepresentation, withholding of information material relevant to the report or required by RPS, or other default relating to such information, whether on the client's part or that of the other information sources, unless such fraud, misrepresentation, withholding or such other default is evident to RPS without further enquiry. It is expressly stated that no independent verification of any documents or information supplied by the client or others on behalf of the client has been made. The report shall be used for general information only.

Prepared by:

RPS
101 Park Drive, Milton Park, Abingdon,
Oxfordshire, OX14 4RY
United Kingdom

Prepared for:

Photovolt Development Partners GmbH,
on behalf of SolarFive Ltd.

Contents

1	Introduction.....	4
1.1	Purpose of this Document	4
1.2	Selection Process	4
1.3	Purpose of the Photomontages.....	4
2	Results.....	4
2.1	Viewpoint 101 (Figures 2 - 5).....	4
2.2	Viewpoint 102 (Figures 6 – 9)	5
2.3	Viewpoint 103 (Figures 10 – 13)	5
2.4	Viewpoint 104 (Figures 14 – 17)	5
2.5	Viewpoint 105 (Figures 18 - 21).....	6
2.6	Summary – Viewpoints 101 - 105	6
2.7	Viewpoint 106 (Figures 22 - 25).....	6
2.8	Viewpoint 107 (Figures 26 - 29).....	6
2.9	Viewpoint 108 (Figures 30 - 33).....	6
2.10	Viewpoint 109 (Figures 34 - 37).....	6
2.11	Viewpoint 110 (Figures 38 - 41).....	7
2.12	Viewpoint 111 (Figures 42 - 45).....	7
2.13	Viewpoint 112 (Figures 46 - 49).....	7
2.14	Viewpoint 113 (Figures 50 - 53).....	7
2.15	Viewpoint 114 (Figures 54 - 57).....	8
2.16	Viewpoint 115 (Figures 58 - 61).....	8
2.17	Viewpoint 116 (Figures 62 - 65).....	8
2.18	Viewpoint 117 (Figures 66 - 69).....	8

Tables

No table of figures entries found.

Glossary

Term	Meaning
The Applicant	SolarFive Ltd
The Project	The Botley West Solar Farm
The Site or Order Limits	The area of land encompassing the Project development and shown on Location Plan [AS-024].

Abbreviations

Abbreviation	Meaning
DCO	Development Consent Order
WHS	World Heritage Site
ZTV	Zone of Theoretical Visibility

1 Introduction

1.1 Purpose of this Document

- 1.1.1 This document presents a number of visualisations (photomontages) prepared for the Project. These are additional to the photomontages that were prepared ahead of the submission of DCO application for the Project and which were submitted as part of that application – ES Figures 8.248-8.371 Photomontages (Winter and Summer) [APP-072 – APP-080].
- 1.1.2 These additional photomontages have been produced following consultation with Historic England with the aim of assisting in the understanding of the likely impacts and effects of the Project on the heritage significance of specific heritage assets or groups of such assets.
- 1.1.3 The methodology used for the creation of these additional photomontages is the same as that which was used for the ones previously submitted. This methodology is explained in ES Appendix 8.4: Photomontage methodology [APP-149].

1.2 Selection Process

- 1.2.1 The locations of the Viewpoints used for these additional photomontages are indicated on Figure 1, which also shows the previous Viewpoints used for the photomontages already submitted as part of the DCO application
- 1.2.2 The additional Viewpoints are numbered 101 to 117; all 17 of these locations were agreed in advance with Historic England.

1.3 Purpose of the Photomontages

- 1.3.1 The photomontages from Viewpoints 101 – 105 are all designed to show views in the direction of the Site from various locations within the Blenheim Palace World Heritage Site (WHS). The photomontages from Viewpoints 106 – 110 and from Viewpoints 115 - 117 are all views looking towards the Blenheim Palace WHS from within or directly adjacent to the Site.
- 1.3.2 The photomontage from Viewpoint 111 is designed to show a view towards the Sansom's Platt Scheduled Monument from within the Site.
- 1.3.3 The photomontages from Viewpoints 112 – 114 are designed to show views toward Begbroke from within the Site.

2 Results

2.1 Viewpoint 101 (Figures 2 - 5)

- 2.1.1 The image from Viewpoint 101 looks east from the ground adjacent to the Column of Victory within Blenheim Park. This view is defined as a 'significant view' on Figure 5 within Appendix 3 of the 2017 WHS Management Plan, which is reproduced as Figure 1.4 in ES Appendix 7.4: Heritage Impact Assessment – Blenheim Palace World Heritage Site [APP-141]. The accompanying text in Appendix 3 of the 2017 WHS Management Plan describes that as an *'Important view from Oxford Street, Woodstock towards the Column of Victory in the park, and from the east side of the Grand Avenue near the column, back towards that part of Woodstock immediately beyond the site boundary'*.
- 2.1.2 The Existing Winter View from Viewpoint 101 (Figure 2) confirms that some parts of the settlement at Woodstock are visible in this defined 'significant view', most notably in that part of

the view across the northern end of Queen Pool which is a key part of the designed landscape within Blenheim Park. This view of the settlement is also possible in the summer (Figure 4) albeit obscured to some extent by foliage on the trees.

- 2.1.3 The Illustrative Year 1 Winter View (Figure 3) and Year 15 Summer View (Figure 5) confirm that no part of the Project would be visible in this defined 'significant view', due mostly to the intervening topography along with mature vegetation and existing built development.

2.2 Viewpoint 102 (Figures 6 – 9)

- 2.2.1 This viewpoint is located just in front of the Palace, looking directly towards the tower of the Church of St Martin in Bladon. This is the principal design line for the Palace and the designed landscape, as explained in paragraph 1.4.29 of ES Appendix 7.4: Heritage Impact Assessment – Blenheim Palace World Heritage Site **[APP-141]**.
- 2.2.2 This is the second of the two 'significant views' on Figure 5 within Appendix 3 of the 2017 WHS Management Plan. Figure 1.6 in ES Appendix 7.4: Heritage Impact Assessment – Blenheim Palace World Heritage Site **[APP-141]** shows the same view from the first floor of the Palace.
- 2.2.3 The Existing Winter View from Viewpoint 102 (Figure 6) confirms that the tower of the Church of St Martin in Bladon remains visible in this defined 'significant view'. This view is also possible in the summer (Figure 8) with little change despite the foliage on the trees.
- 2.2.4 The Illustrative Year 1 Winter View (Figure 7) and Year 15 Summer View (Figure 9) confirm that no part of the Project would be visible in this defined 'significant view', due mostly to the intervening topography along with mature vegetation.

2.3 Viewpoint 103 (Figures 10 – 13)

- 2.3.1 This viewpoint is located in the northern part of Blenheim Park, looking south east towards the northern part of the Site. The Column of Victory is visible at the right-hand edge of the image. The Illustrative Year 1 Winter View (Figure 11) and Year 15 Summer View (Figure 13) confirm that no part of the Project would be visible in this view.

2.4 Viewpoint 104 (Figures 14 – 17)

- 2.4.1 This viewpoint is located within Lower Park, south east of the Palace and close to the River Glyme. The Zone of Theoretical Visibility (ZTV) established for the Project suggests that elements of the Project could be visible in views out from locations within Lower Park; the ZTV is shown on Figure 1.8 in ES Appendix 7.4: Heritage Impact Assessment – Blenheim Palace World Heritage Site **[APP-141]**.
- 2.4.2 Paragraph 1.4.40 of ES Appendix 7.4: Heritage Impact Assessment – Blenheim Palace World Heritage Site **[APP-141]** explains '*Visits have been undertaken to all of the areas within the Blenheim Palace WHS for which the ZTV suggests potential visibility of (part of) the Project Site. These visits have confirmed that no element of the Project would be visible from any location within the WHS, regardless of the season or the time of day*'. The paragraph continues '*Additional Viewpoints have been agreed with Historic England for the production of visualisations that will confirm this*'.
- 2.4.3 The Existing Winter View from Viewpoint 104 (Figure 14) shows that glimpsed views of buildings within Bladon are possible from within Lower Park, and these glimpsed views are also possible in the summer (Figure 16). The Illustrative Year 1 Winter View (Figure 15) and Year 15 Summer View (Figure 17) confirm that no part of the Project would be visible in this view due to the intervening topography along with mature vegetation.

2.5 Viewpoint 105 (Figures 18 - 21)

- 2.5.1 This Viewpoint is also located within Lower Park, in an area from which suggests that elements of the Project could be visible. The Existing Winter and Summer Views (Figures 18 and 20) confirm that visibility in the direction of the Project does not extend beyond the heavily vegetated boundary of the WHS.

2.6 Summary – Viewpoints 101 - 105

- 2.6.1 The baseline images and visualisations prepared for the views from Viewpoints 101-105 confirm the Applicant's position as set out in paragraph 1.4.40 of ES Appendix 7.4: Heritage Impact Assessment – Blenheim Palace World Heritage Site [APP-141]; '*... no element of the Project would be visible from any location within the WHS, regardless of the season or the time of day*'.

2.7 Viewpoint 106 (Figures 22 - 25)

- 2.7.1 This Viewpoint is located at the western edge of the Site, looking south west across the valley of the River Glyme. The purpose behind the selection of this location was to examine one of the views towards the Blenheim Palace WHS and see whether or not it is possible to discern the WHS in such views.
- 2.7.2 The Existing Winter and Summer Views from Viewpoint 106 (Figures 22 and 24) demonstrate that it is not possible to see the WHS in this view, or even to discern its presence through the identification of potential designed planting. The Existing Summer View (Figure 24) in particular shows that the dominant feature on the skyline is actually a large agricultural building.

2.8 Viewpoint 107 (Figures 26 - 29)

- 2.8.1 This viewpoint is located within the Site, close to a public footpath. The view looks towards the WHS. In the Existing Winter and Summer Views (Figures 26 and 28), the thick woodland within High Park (and within the WHS) is visible to the left of centre.
- 2.8.2 The Illustrative Year 1 Winter View (Figure 27) and the Illustrative Year 15 Summer View (Figure 29) show that the solar PV panels and perimeter fence would largely obscure this view in which the High Park woodland is visible.

2.9 Viewpoint 108 (Figures 30 - 33)

- 2.9.1 This viewpoint is located within the Site, in a block of farmland to the south of Bladon, and looks north west towards the Blenheim Palace WHS. It is adjacent to a public footpath. In the Existing Winter and Summer Views (Figures 30 and 32), woodland within The Lince forms the skyline for much of the image. Although The Lince is outside the WHS (but within the Grade I Registered Park and Garden), some of the visible woodland may actually be within High Park and therefore within the WHS.
- 2.9.2 The Illustrative Year 1 Winter View (Figure 31) and the Illustrative Year 15 Summer View (Figure 33) show that the solar PV panels and perimeter fence would substantially obscure this view in which the woodland is visible.

2.10 Viewpoint 109 (Figures 34 - 37)

- 2.10.1 This viewpoint is located at the northern edge of Burleigh Wood, looking north west across the Site towards the Blenheim Palace WHS. There is no public footpath in this area. In the Existing Winter and Summer Views (Figures 34 and 36), woodland within the western part of the WHS is visible on the skyline. In the Existing Winter View (Figure 34), it is also possible to see the

modern light industrial buildings at the Hanborough Business Park in the left-hand side of the image, but these buildings are far less visible in the Existing Summer View (Figure 36).

- 2.10.2 The Illustrative Year 1 Winter View (Figure 35) and the Illustrative Year 15 Summer View (Figure 37) show that the solar PV panels and perimeter fence would partially obscure this view in which the woodland within the WHS is visible.

2.11 Viewpoint 110 (Figures 38 - 41)

- 2.11.1 This viewpoint is located within the Site, close to a public footpath which passes to the east of Withy Clump. The view looks towards the WHS. In the Existing Winter and Summer Views (Figures 38 and 40), the presence of the WHS is not readily discernible, although if the image is zoomed it is actually possible to see glimpsed views of the very upper parts of the Palace within the top of the treeline.
- 2.11.2 The Illustrative Year 1 Winter View (Figure 39) shows that the solar PV panels and perimeter fence would largely obscure this view (although the current glimpsed views of the very upper parts of the Palace would remain visible. In the Illustrative Year 15 Summer View (Figure 41), the proposed planting between the perimeter fence and the public footpath would restrict any views out towards the WHS.

2.12 Viewpoint 111 (Figures 42 - 45)

- 2.12.1 This viewpoint is located within the Site and within a part of a field where there is no public access. It looks south towards the Sansom's Platt Scheduled Monument which in the lower ground in the central part of the image. In the Existing Summer View (Figure 44) the Scheduled Monument shows as a vivid green strip with Sansom's Cottages and the Oxford School of Drama visible to the right. This image helps with the understanding of the setting of the Scheduled Monument.
- 2.12.2 The viewpoint is actually completely within an area where solar PV panels are proposed, consequently the Illustrative Year 1 Winter View (Figure 43) and the Illustrative Year 15 Summer View (Figure 45) show the panels and nothing else.

2.13 Viewpoint 112 (Figures 46 - 49)

- 2.13.1 Viewpoint 112 is located within the Site and just to the west of the A44 road, close to the Rowel Brook. There is no public access at this location. The view looks south towards Begbroke. In the Existing Winter View (Figure 46), the northern part of the house known as St Philip's Priory is visible to the left of the centre of the image, along with the tower of the Church of St Michael. Both of these buildings are also clearly visible in the Existing Summer View (Figure 48).
- 2.13.2 The Illustrative Year 1 Winter View (Figure 47) and the Illustrative Year 15 Summer View (Figure 49) show that the solar PV panels and perimeter fence would completely obscure this view.

2.14 Viewpoint 113 (Figures 50 - 53)

- 2.14.1 Viewpoint 113 is located within the Site and on a public footpath that connects Begbroke to Bladon. The view looks south east towards Begbroke. In the Existing Winter and Summer Views (Figures 50 and 52), the northern part of the house known as St Philip's Priory is visible to the left of the centre of the image, along with the tower of the Church of St Michael. The Existing Summer View (Figure 52) in particular shows how the eye is drawn along the footpath with the church tower just slightly to the left at the end of the footpath.
- 2.14.2 The Illustrative Year 1 Winter View (Figure 51) shows that the solar PV panels and perimeter fence (and a PCS unit) would be present on either side of the footpath and would obscure the

views of the church tower and the house known as St Philip's Priory. In the Illustrative Year 15 Summer View (Figure 53), the proposed planting along each side of the footpath obscures the longer views from this location.

2.15 Viewpoint 114 (Figures 54 - 57)

- 2.15.1 Viewpoint 114 is located within the Site and on the edge of the woodland block at Bladon Heath, looking east towards Bladon. There is no public access at this location. In the Existing Winter and Summer Views (Figures 54 and 56), residential buildings in the south western part of Begbroke are visible, but there are no views of the church tower or the house known as St Philip's Priory.
- 2.15.2 The Illustrative Year 1 Winter View (Figure 55) and the Illustrative Year 15 Summer View (Figure 57) show that the solar PV panels and perimeter fence (and a PCS unit) would fully obscure the longer views from this location.

2.16 Viewpoint 115 (Figures 58 - 61)

- 2.16.1 Viewpoint 115 is located within the Site and on a public footpath, looking north west towards the Blenheim Palace WHS. In the Existing Winter and Summer Views (Figures 58 and 60), the woodland in the distance in the left hand part of the image is within the WHS.
- 2.16.2 In the Illustrative Year 1 Winter View (Figure 59), an area of solar PV panels is present on the right-hand side of the image, enclosed within a deer-proof fence. The view of the woodland in the WHS is slightly obscured by the fence. In the Illustrative Year 15 Summer View (Figure 61), the proposed planting along the outer edge of the fence fully obscures the view of the woodland within the WHS.

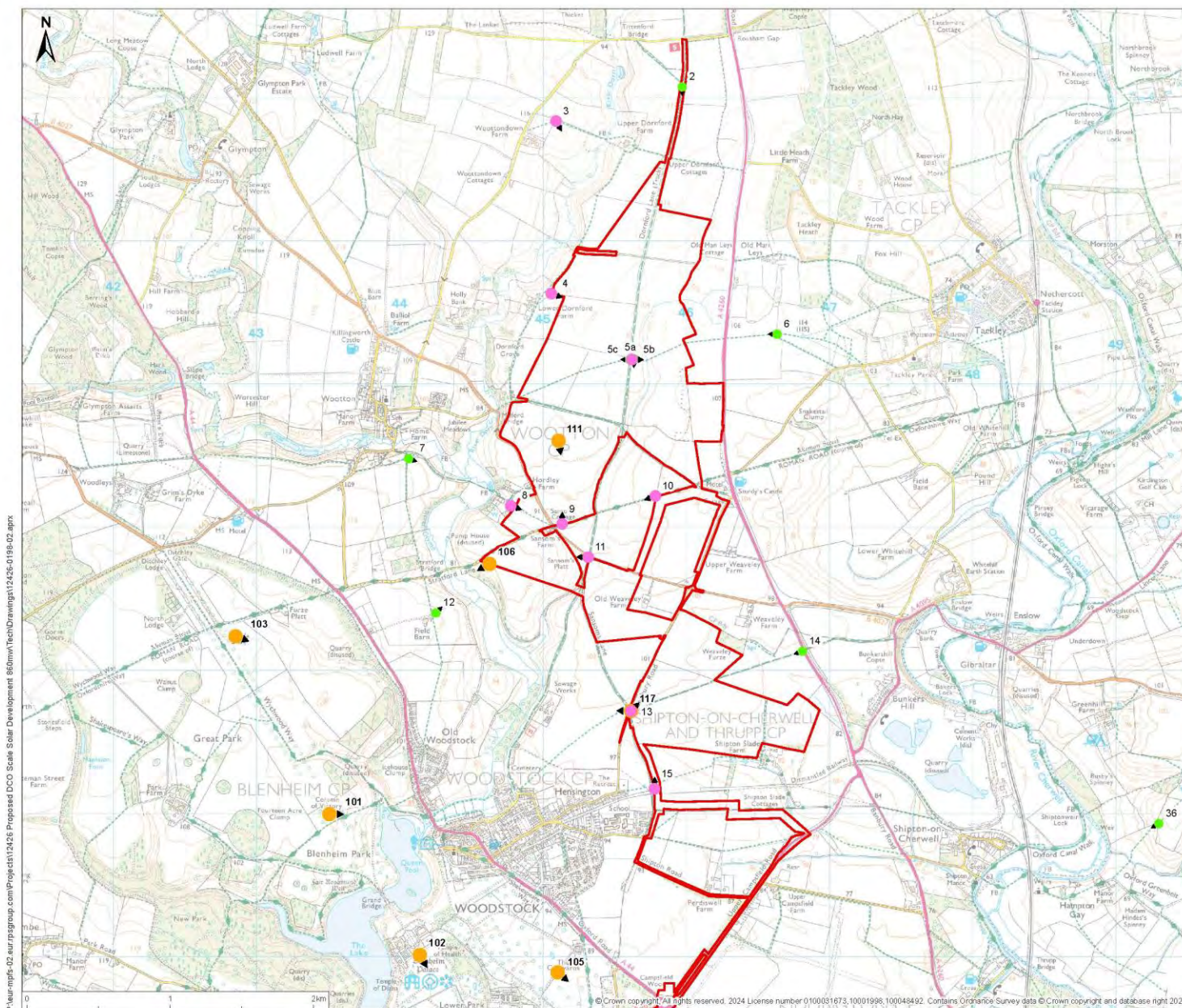
2.17 Viewpoint 116 (Figures 62 - 65)

- 2.17.1 Viewpoint 116 is located outside the Site and at the northern edge of the block of woodland known as Bladon Heath. The view looks north west towards the Blenheim Palace WHS. There is no public access to this location. The fields in the foreground of this view were removed from the Project at an early stage in the design process. One of the route options for the 275 kV cable runs along the field boundary that can be seen in the centre ground.
- 2.17.2 The Existing Winter and Summer Views (Figures 62 and 64) show that Blenheim Palace and other elements of the WHS including Lower Park are clearly visible in the distance from this location, with residential areas of Bladon also clearly seen in the middle distance. This is almost certainly the most impressive view of the Palace from any location outside the WHS.
- 2.17.3 The Illustrative Year 1 Winter View (Figure 63) and the Illustrative Year 15 Summer View (Figure 65) show that no part of the Project would be visible in views from this location, with the single exception of construction work for the 275 kV cable route if this is selected as the preferred option.

2.18 Viewpoint 117 (Figures 66 - 69)

- 2.18.1 This Viewpoint is located at the western edge of the Site, looking west across the valley of the River Glyme. The purpose behind the selection of this location was to examine one of the views towards the Blenheim Palace WHS and see whether or not it is possible to discern the WHS in such views. This is actually the location as Viewpoint 13, but that view from that location is looking north east across the Site.
- 2.18.2 The Existing Winter and Summer Views from Viewpoint 117 (Figures 66 and 68) demonstrate that it is not possible to see the WHS in this view, or even to discern its presence through the

identification of potential designed planting. The woodland on the skyline is located on the western side of the valley of the River Glyme.



© 2024 RPS Group
Notes
1. This drawing has been prepared in accordance with the scope of RPS's appointment with its client and is subject to the terms and conditions of that appointment. RPS accepts no liability for any use of this document other than by its client and only for the purposes for which it was prepared and provided.
2. If received electronically it is the recipient's responsibility to print to correct scale. Only written dimensions should be used.

Legend

- Project Site Boundary
- Additional Viewpoint
- ▲ LVIA Representative Viewpoints - with photomontage
- ▲ LVIA Representative Viewpoints - no photomontage

Rev	Description	By	CB	Date



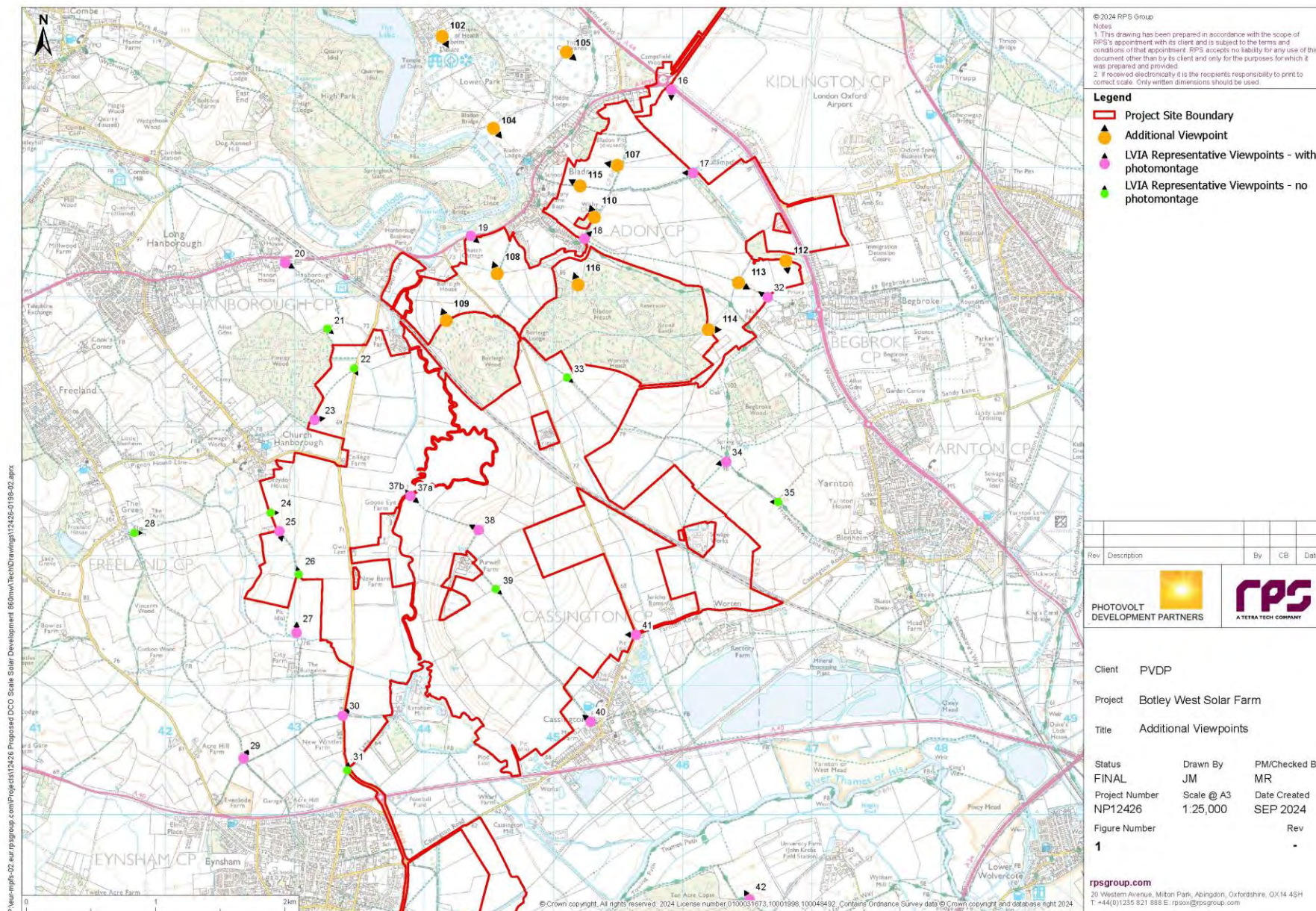
Client PVDP

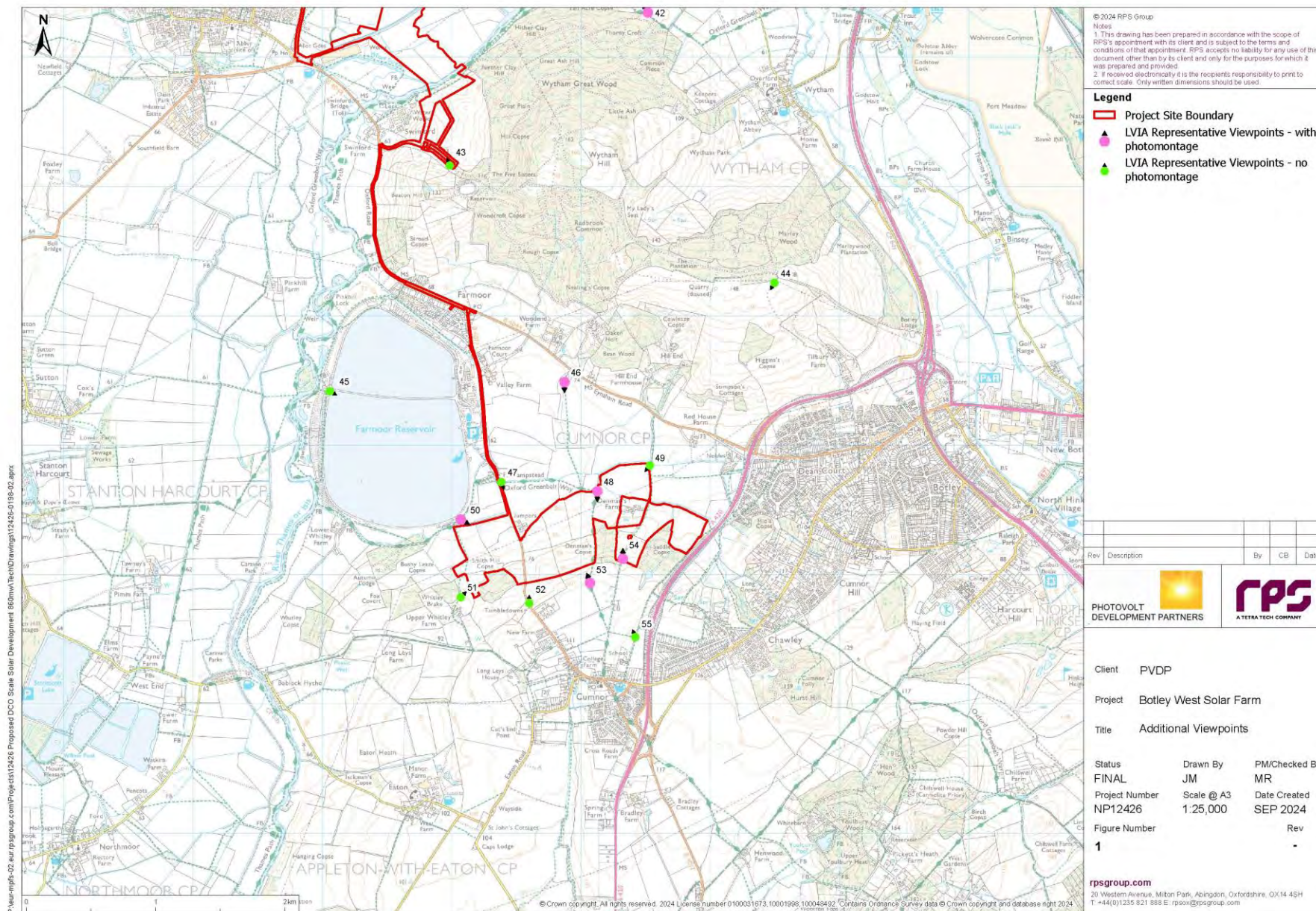
Project Botley West Solar Farm

Title Additional Viewpoints

Status	Drawn By	PM/Checked By
FINAL	JM	MR
Project Number	Scale @ A3	Date Created
NP12426	1:25,000	SEP 2024
Figure Number		Rev
1		-

rpsgroup.com
20 Western Avenue, Milton Park, Abingdon, Oxfordshire, OX14 4SH
T: +44(0)1235 921 988 E: rps@rpsgroup.com







12426-0228-02



Visualisation Type	Type 3	Photography Date and Time	05/02/2025 14:41	Client	PVDP	Title	Heritage Viewpoint 101
Projection	Cylindrical	Viewpoint Location	443531, 216997	Project	Botley West Solar Farm		
Camera and Lens Type	Full Frame Sensor / 50mm	Viewpoint Camera Height	103 m AOD	Project Number	NP12426		Existing Winter View
Height of Camera Lens above ground	1.5 m	Direction of View	East			Figure Number	2
Horizontal Field of View	90°	Distance to Development Site	2.5 km				

Proposed Solar Development - nothing visible



12426-0228-02



NOTES.
The photomontage model is generated on detailed topographical site survey data. 1m resolution Point Cloud LiDAR data of the surrounding area is used for viewpoint alignment as well as aerial photography.

Visualisation Type	Type 3
Projection	Cylindrical
Camera and Lens Type	Full Frame Sensor / 50mm
Height of Camera Lens above ground	1.5 m
Horizontal Field of View	90°

Photography Date and Time	05/02/2025 14:41
Viewpoint Location	443531, 216997
Viewpoint Camera Height	103 m AOD
Direction of View	East
Distance to Development Site	2.5 km

Client	PVDP
Project	Botley West Solar Farm
Project Number	NP12426

Title	Heritage Viewpoint 101
	Proposed Illustrative Winter View - Year 1
Figure Number	3



12426-028-02



Visualisation Type	Type 3
Projection	Cylindrical
Camera and Lens Type	Full Frame Sensor / 50mm
Height of Camera Lens above ground	1.5 m
Horizontal Field of View	90°

Photography Date and Time	02/10/2024 12:12
Viewpoint Location	443531, 216997
Viewpoint Camera Height	103 m AOD
Direction of View	East
Distance to Development Site	2.5 km

Client	PVDP
Project	Botley West Solar Farm
Project Number	NP12426

Title	Heritage Viewpoint 101
	Existing Summer View
Figure Number	4

Proposed Solar Development - nothing visible





12426-0228-02



Visualisation Type	Type 3
Projection	Cylindrical
Camera and Lens Type	Full Frame Sensor / 50mm
Height of Camera Lens above ground	1.5 m
Horizontal Field of View	90°

Photography Date and Time	05/02/2025 15:29
Viewpoint Location	444149, 216012
Viewpoint Camera Height	99 m AOD
Direction of View	Southeast
Distance to Development Site	1.4 km

Client	PVDP
Project	Botley West Solar Farm
Project Number	NP12426

Title	Heritage Viewpoint 102
	Existing Winter View
Figure Number	6

Proposed Solar Development - nothing visible





12426-0228-02



Visualisation Type	Type 3
Projection	Cylindrical
Camera and Lens Type	Full Frame Sensor / 50mm
Height of Camera Lens above ground	1.5 m
Horizontal Field of View	90°

Photography Date and Time	02/10/2024 13:24
Viewpoint Location	444149, 216012
Viewpoint Camera Height	99 m AOD
Direction of View	Southeast
Distance to Development Site	1.4 km

Client	PVDP
Project	Botley West Solar Farm
Project Number	NP12426

Title	Heritage Viewpoint 102
	Existing Summer View
Figure Number	8

Proposed Solar Development - nothing visible





12426-0228-02



Visualisation Type	Type 3
Projection	Cylindrical
Camera and Lens Type	Full Frame Sensor / 50mm
Height of Camera Lens above ground	1.5 m
Horizontal Field of View	90°

Photography Date and Time	05/02/2025 14:10
Viewpoint Location	442853, 218247
Viewpoint Camera Height	111 m AOD
Direction of View	South-southeast
Distance to Development Site	1.8 km

Client	PVDP
Project	Botley West Solar Farm
Project Number	NP12426

Title	Heritage Viewpoint 103
	Existing Winter View
Figure Number	10



NOTES.
The photomontage model is generated on detailed topographical site survey data. 1m resolution Point Cloud LiDAR data of the surrounding area is used for viewpoint alignment as well as aerial photography.

Visualisation Type	Type 3
Projection	Cylindrical
Camera and Lens Type	Full Frame Sensor / 50mm
Height of Camera Lens above ground	1.5 m
Horizontal Field of View	90°

Photography Date and Time	05/02/2025 14:10
Viewpoint Location	442853, 218247
Viewpoint Camera Height	111 m AOD
Direction of View	South-southeast
Distance to Development Site	1.8 km

Client	PVDP
Project	Botley West Solar Farm
Project Number	NP12426

Title	Heritage Viewpoint 103
	Proposed Illustrative Winter View - Year 1
Figure Number	11




12426-028-02



Visualisation Type	Type 3	Photography Date and Time	02/10/2024 11:45	Client	PVDP	Title	Heritage Viewpoint 103
Projection	Cylindrical	Viewpoint Location	442853, 218247	Project	Botley West Solar Farm		
Camera and Lens Type	Full Frame Sensor / 50mm	Viewpoint Camera Height	111 m AOD	Project Number	NP12426		
Height of Camera Lens above ground	1.5 m	Direction of View	South-southeast			Existing Summer View	
Horizontal Field of View	90°	Distance to Development Site	1.8 km				
						Figure Number	12



	<p>NOTES.</p> <p>The photomontage model is generated on detailed topographical site survey data. 1m resolution Point Cloud LiDAR data of the surrounding area is used for viewpoint alignment as well as aerial photography.</p>	<table><tr><td>Visualisation Type</td><td>Type 3</td></tr><tr><td>Projection</td><td>Cylindrical</td></tr><tr><td>Camera and Lens Type</td><td>Full Frame Sensor / 50mm</td></tr><tr><td>Height of Camera Lens above ground</td><td>1.5 m</td></tr><tr><td>Horizontal Field of View</td><td>90°</td></tr></table>	Visualisation Type	Type 3	Projection	Cylindrical	Camera and Lens Type	Full Frame Sensor / 50mm	Height of Camera Lens above ground	1.5 m	Horizontal Field of View	90°	<table><tr><td>Photography Date and Time</td><td>02/10/2024 11:45</td></tr><tr><td>Viewpoint Location</td><td>442853, 218247</td></tr><tr><td>Viewpoint Camera Height</td><td>111 m AOD</td></tr><tr><td>Direction of View</td><td>South-southeast</td></tr><tr><td>Distance to Development Site</td><td>1.8 km</td></tr></table>	Photography Date and Time	02/10/2024 11:45	Viewpoint Location	442853, 218247	Viewpoint Camera Height	111 m AOD	Direction of View	South-southeast	Distance to Development Site	1.8 km	<table><tr><td>Client</td><td>PVDP</td></tr><tr><td>Project</td><td>Botley West Solar Farm</td></tr><tr><td>Project Number</td><td>NP12426</td></tr></table>	Client	PVDP	Project	Botley West Solar Farm	Project Number	NP12426	<table><tr><td>Title</td><td>Heritage Viewpoint 103</td></tr><tr><td></td><td>Proposed Illustrative Summer View - Year 15</td></tr><tr><td>Figure Number</td><td>13</td></tr></table>	Title	Heritage Viewpoint 103		Proposed Illustrative Summer View - Year 15	Figure Number	13
Visualisation Type	Type 3																																				
Projection	Cylindrical																																				
Camera and Lens Type	Full Frame Sensor / 50mm																																				
Height of Camera Lens above ground	1.5 m																																				
Horizontal Field of View	90°																																				
Photography Date and Time	02/10/2024 11:45																																				
Viewpoint Location	442853, 218247																																				
Viewpoint Camera Height	111 m AOD																																				
Direction of View	South-southeast																																				
Distance to Development Site	1.8 km																																				
Client	PVDP																																				
Project	Botley West Solar Farm																																				
Project Number	NP12426																																				
Title	Heritage Viewpoint 103																																				
	Proposed Illustrative Summer View - Year 15																																				
Figure Number	13																																				



12426-0228-02



Visualisation Type	Type 3
Projection	Cylindrical
Camera and Lens Type	Full Frame Sensor / 50mm
Height of Camera Lens above ground	1.5 m
Horizontal Field of View	90°

Photography Date and Time	05/02/2025 16:35
Viewpoint Location	444545, 215318
Viewpoint Camera Height	81 m AOD
Direction of View	Southeast
Distance to Development Site	700 m

Client	PVDP
Project	Botley West Solar Farm
Project Number	NP12426

Title	Heritage Viewpoint 104
	Existing Winter View
Figure Number	14



Proposed Solar Development - nothing visible

Proposed Solar Development - nothing visible



12426-028-02



Visualisation Type	Type 3
Projection	Cylindrical
Camera and Lens Type	Full Frame Sensor / 50mm
Height of Camera Lens above ground	1.5 m
Horizontal Field of View	90°

Photography Date and Time	02/10/2024 13:04
Viewpoint Location	444545, 215318
Viewpoint Camera Height	81 m AOD
Direction of View	Southeast
Distance to Development Site	700 m

Client	PVDP
Project	Botley West Solar Farm
Project Number	NP12426

Title	Heritage Viewpoint 104
	Existing Summer View
Figure Number	16



12426-0228-02



NOTES.
The photomontage model is generated on detailed topographical site survey data. 1m resolution Point Cloud LiDAR data of the surrounding area is used for viewpoint alignment as well as aerial photography.

Visualisation Type	Type 3
Projection	Cylindrical
Camera and Lens Type	Full Frame Sensor / 50mm
Height of Camera Lens above ground	1.5 m
Horizontal Field of View	90°

Photography Date and Time	02/10/2024 13:04
Viewpoint Location	444545, 215318
Viewpoint Camera Height	81 m AOD
Direction of View	Southeast
Distance to Development Site	700 m

Client	PVDP
Project	Botley West Solar Farm
Project Number	NP12426

Title	Heritage Viewpoint 104
	Proposed Illustrative Summer View - Year 15
Figure Number	17



12426-0228-02



Visualisation Type	Type 3
Projection	Cylindrical
Camera and Lens Type	Full Frame Sensor / 50mm
Height of Camera Lens above ground	1.5 m
Horizontal Field of View	90°

Photography Date and Time	05/02/2025 16:12
Viewpoint Location	445098, 215892
Viewpoint Camera Height	88 m AOD
Direction of View	Southeast
Distance to Development Site	600 m

Client	PVDP
Project	Botley West Solar Farm
Project Number	NP12426

Title	Heritage Viewpoint 105
	Existing Winter View
Figure Number	18



Proposed Solar Development - nothing visible

12426-0228-02



NOTES.
The photomontage model is generated on detailed topographical site survey data. 1m resolution Point Cloud LiDAR data of the surrounding area is used for viewpoint alignment as well as aerial photography.


Visualisation Type	Type 3
Projection	Cylindrical
Camera and Lens Type	Full Frame Sensor / 50mm
Height of Camera Lens above ground	1.5 m
Horizontal Field of View	90°

Photography Date and Time	05/02/2025 16:12
Viewpoint Location	445098, 215892
Viewpoint Camera Height	88 m AOD
Direction of View	Southeast
Distance to Development Site	600 m

Client	PVDP
Project	Botley West Solar Farm
Project Number	NP12426

Title	Heritage Viewpoint 105
	Proposed Illustrative Winter View - Year 1
Figure Number	19



	Visualisation Type	Type 3	Photography Date and Time	02/10/2024 14:01	Client PVDP	
	Projection	Cylindrical	Viewpoint Location	445098, 215892		
	Camera and Lens Type	Full Frame Sensor / 50mm	Viewpoint Camera Height	88 m AOD		
	Height of Camera Lens above ground	1.5 m	Direction of View	Southeast		
	Horizontal Field of View	90°	Distance to Development Site	600 m		
					Project Botley West Solar Farm	
					Project Number NP12426	
						Title Heritage Viewpoint 105
						Existing Summer View
						Figure Number 20